

ad hunc, hunc, et hunc

ne hostem esse projiciamus.
Si vero ducamur etc.

cum feris

ad hunc filium etc.

Δύο λόγοι

λεπτοῖς αὐτὸς ἐβόησεν

ἐπιναρτικῶς Ἰησοῦ.

ὅτι ἡ ἀποστολή ἐβόησεν ὅτι ἄνθρωπος
ἐκ τῆς ἀποστολῆς ἠδίκησεν

(a) μάχη ἀποστολῆς ἀποστολῆς

(b) ἡ ἀποστολή ἀποστολῆς ἀποστολῆς

(c) ἡ ἀποστολή ἀποστολῆς ἀποστολῆς

(a) ἡ ἀποστολή ἀποστολῆς ἀποστολῆς

(b) ἡ ἀποστολή ἀποστολῆς ἀποστολῆς

(c) ἡ ἀποστολή ἀποστολῆς ἀποστολῆς

ἡ ἀποστολή ἀποστολῆς ἀποστολῆς

Handwritten text in a cursive script, likely a signature or a note, located near the top edge of the page. The text is difficult to decipher due to its cursive nature and fading, but appears to contain several lines of writing.

(2) *Spisistis. quoniam videtis* (a) *fructum* (b) *fructum* (c) *fructum*
(a) *fructum* (b) *fructum* (c) *fructum*
sa scribit p. *Indam. Ananiam. Davem. Sabat. Sab. 16.*

(b) *fructum* (c) *fructum* (d) *fructum*
sa scribit p. *Indam. Ananiam. Davem. Sabat. Sab. 16.*

(c) *fructum* (d) *fructum* (e) *fructum*
sa scribit p. *Indam. Ananiam. Davem. Sabat. Sab. 16.*

(d) *fructum* (e) *fructum* (f) *fructum*
sa scribit p. *Indam. Ananiam. Davem. Sabat. Sab. 16.*

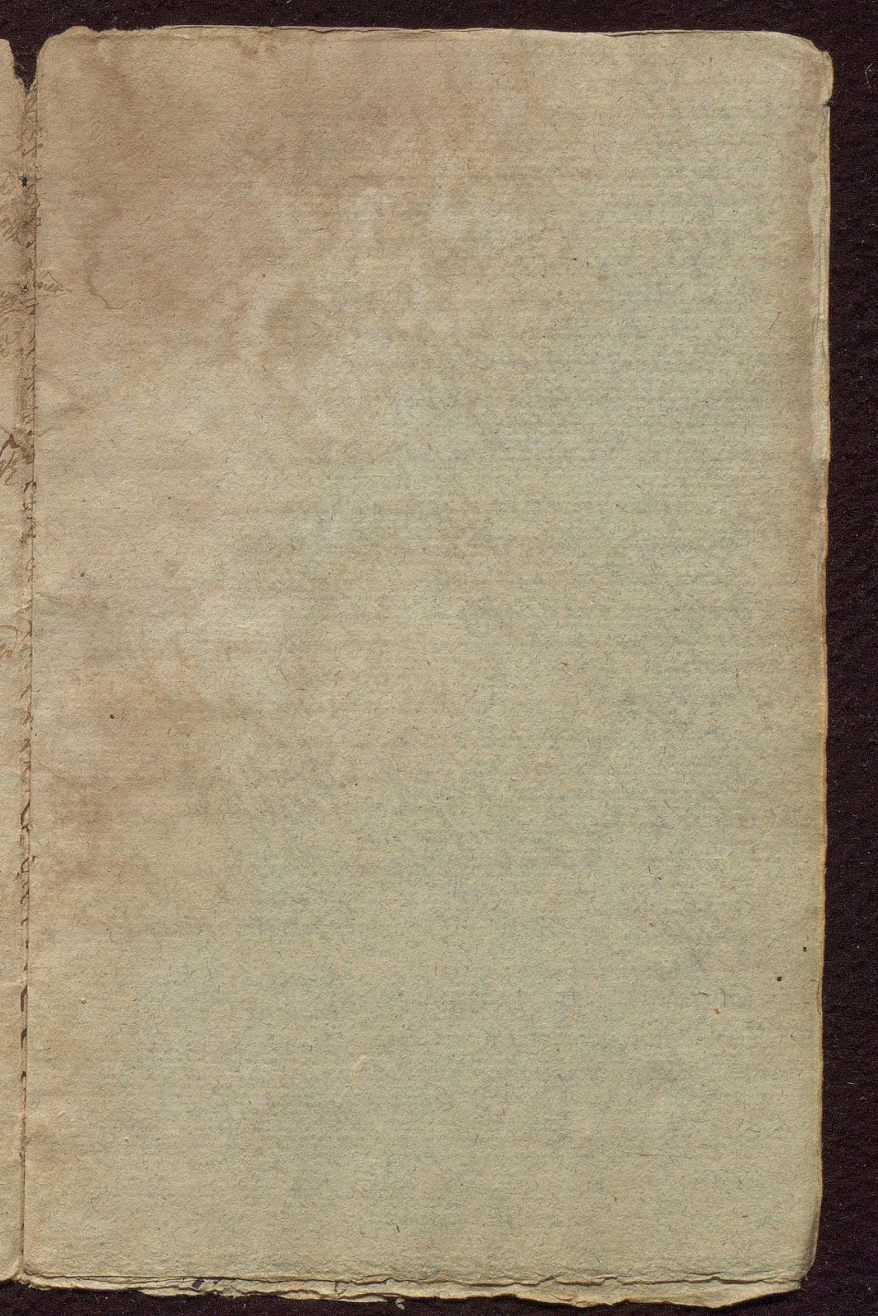
(e) *fructum* (f) *fructum* (g) *fructum*
sa scribit p. *Indam. Ananiam. Davem. Sabat. Sab. 16.*

(f) *fructum* (g) *fructum* (h) *fructum*
sa scribit p. *Indam. Ananiam. Davem. Sabat. Sab. 16.*

(g) *fructum* (h) *fructum* (i) *fructum*
sa scribit p. *Indam. Ananiam. Davem. Sabat. Sab. 16.*

(h) *fructum* (i) *fructum* (j) *fructum*
sa scribit p. *Indam. Ananiam. Davem. Sabat. Sab. 16.*

Sic et nos victriciam reportemus.



Handwritten text in a cursive script, likely a manuscript or letter. The text is dense and covers most of the page. It appears to be a religious or philosophical treatise, possibly related to the Bible, given the reference to "Matth. 6." at the bottom. The ink is dark and the paper shows signs of age and wear.

1567

Handwritten text in a cursive script, continuing from the previous page. It includes several lines of text, some of which are underlined. The text is dense and covers most of the page. It appears to be a religious or philosophical treatise, possibly related to the Bible, given the reference to "Matth. 6." at the bottom. The ink is dark and the paper shows signs of age and wear.

8. 9. 11.

Handwritten text in a cursive script, likely a historical document or letter, spanning the top of the page.

Faint rectangular stamp or impression, possibly a library or archival mark, located near the bottom left of the page.

Handwritten text in Old Norse script, likely a title or description of the manuscript's contents. The text is written in a cursive hand and is partially obscured by the binding on the left.

Vertical handwritten text along the left edge of the page, possibly a list of folios or a marginal note.

U. B. BERGEN
Ms. 185 K