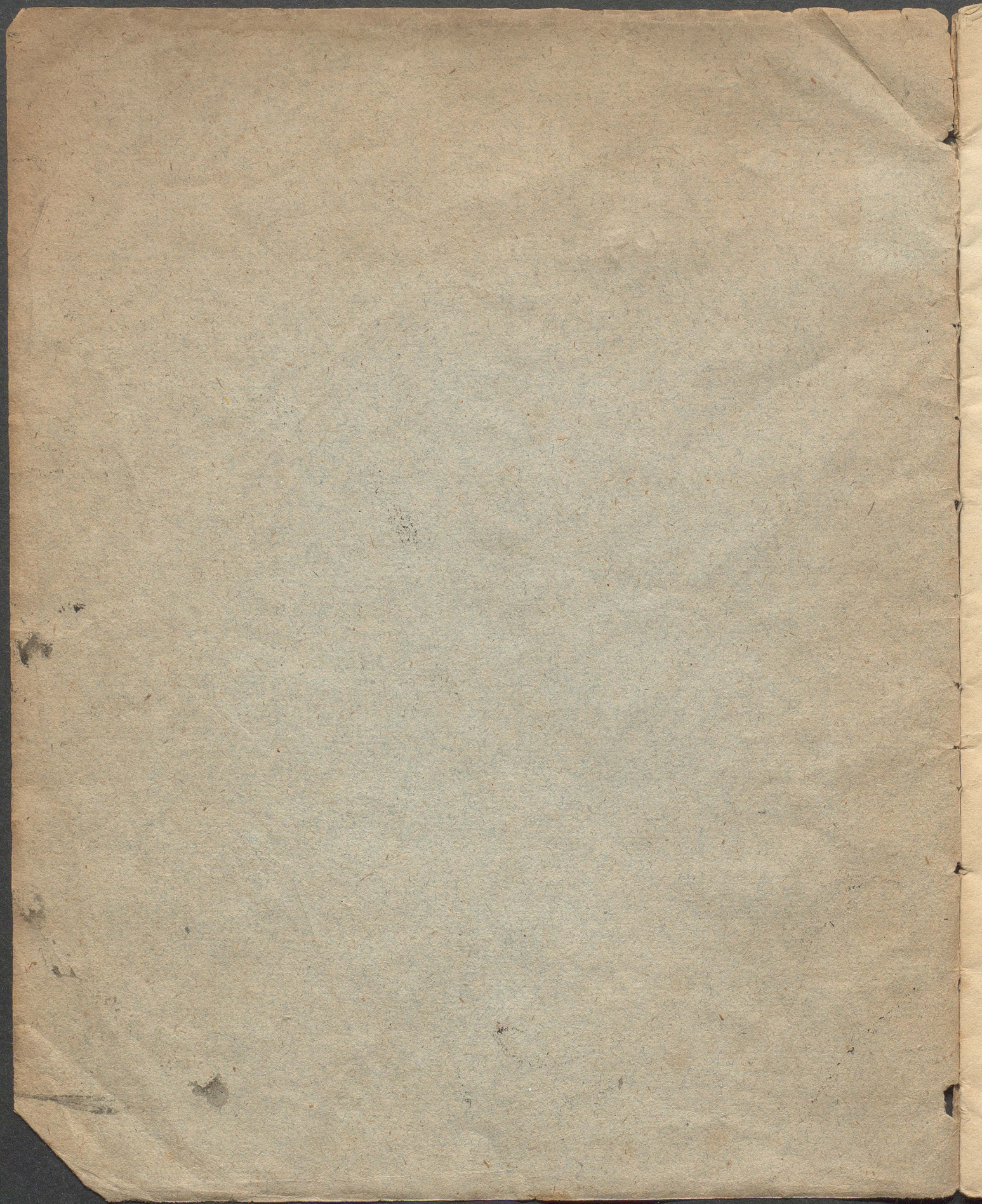


U. B. BERGEM

No. 69



A
Erlingsson

Christie

2

Efterstaaende Tabeller, I til VI, ere Afskriv-
ter af Danielis Eberhardi Harvingii clavis
Diplomatica, tabula I - VI, henhørende
til de af ham anførte alfabeta varia,
der findes mellem pag: 196 og 197. —

U. B. BERGEN
Ms. 69

Tabula Alphabetica I.

Alphabetum magis veterrimi Codicis apud Heribipontensis
Epistolas D. Pauli cum Praefactionibus complectentis.

A	B	C	D	E	F	G	H	I	L	M
a	b	c	d	e	f	g	h	i	l	m
N	O	P	Q	R	S	T	X			
n	o	p	q	r	s	t	x			

II Alphabetum ex libris Dialogorum et Homiliarum D. Gregorii cum vocabulis aliquot notabilioribus.

a	b	c	d	e	f	g	h	i	l	m	n	o	p	q	r	s
a	b	c	d	e	f	g	h	i	l	m	n	o	p	q	r	s
t	u	x														
t	u	x														

SICUT NON DUBITO ME MISSE NON

NUMquam

Faint, illegible text at the top of the page, possibly a header or title.

Faint, illegible text below the header, possibly a subtitle or introductory line.

Main body of faint, illegible text, possibly bleed-through from the reverse side of the page. The text is arranged in several lines and is enclosed within a faint rectangular border.

Tabula Alphabeticæ II

III Gallicum vetus ex Mabillonio de re dipl.

A	A.Λ.Δ.Α.Χ	I		R	RKR ʀʀ
B	B	K		S	Z ʒ ʒ.ε.ʃ
C	C.ʃ.F	L	Λ.ʀ.ʃ.	T	Γ
D	Δ.ʀ.ʃ.ʒ.ʃ.ʃ.	M	ʃ.ʃ.ʃ.ʃ.ʃ.ʃ.	V	ʒ.ʃ.ʃ.ʃ.ʃ.ʃ.
E	Ε.ʃ.ʃ.	N	ʃ.ʃ.	X	Χ
F	ʃ.ʃ.ʃ.ʃ.ʃ.ʃ.	O	ʃ.ʃ.	V	et s.ʃ.ʃ.
G	ʃ.ʃ.ʃ.ʃ.ʃ.ʃ.	P	ʃ.ʃ.		
H	ʃ.ʃ.	Q	ʃ.ʃ.		

IV Gothicum.

A. B. Γ. Δ. Ε. Ϟ. η. ι. vel. ἰ. κ. λ. μ. ν. ϙ. π. ϙ. Ϟ. ϟ. Ϡ. ϡ. Ϣ. ϣ. Ϥ. ϥ. Ϧ. ϧ. Ϩ. ϩ. Ϫ. ϫ. Ϭ.

V Alphabetum Seculi VI

a. b. c. d. e. l. f. z. ʒ. h. i. l. m. n. r. u. o. p.
 a. ʃ. ʃ. ʃ. ʃ. ʃ. ʃ. u. ʃ. ʃ.

VI Franco-gallicum seu Merovingicum

a. a. a. b. b. c. e. d. i. l. e. ʃ. f. g. h. i. l. i. m. n. o. p. q. r. r. a. u. u. g.
 ʃ. ʃ. ʃ. ʃ. ʃ.

VII Alphabetum Gallicum

a. a. b. c. d. e. e. f. f. z. g. h. i. l. m. n. o. p. q. r. r. s. t. u.
 x. x. d. b.

VIII Saxoniarum Vetus f.

a. d. b. b. c. d. i. l. e. ʃ. f. z. h. i. l. m. n. o. p. q. y. ʒ. w. n. ʃ. ʒ. v.

IX Longobardicum Seculi VIII

a. b. c. d. e. f. g. h. i. l. m. n. o. p. q. r. w. a. s. r. a. u. x.
 v. z. ʃ. u. n. d. e. r.

X Carolinum seu Francicum

a. b. c. d. e. f. g. h. i. m. n. o. p. q. r. s. t. u. x.

1	2	3	4	5	6	7	8	9	10
11	12	13	14	15	16	17	18	19	20
21	22	23	24	25	26	27	28	29	30
31	32	33	34	35	36	37	38	39	40
41	42	43	44	45	46	47	48	49	50
51	52	53	54	55	56	57	58	59	60
61	62	63	64	65	66	67	68	69	70
71	72	73	74	75	76	77	78	79	80
81	82	83	84	85	86	87	88	89	90
91	92	93	94	95	96	97	98	99	100

The following is a list of the names of the
 persons who have been admitted to the
 membership of the Society since the
 last meeting. The names are given in
 the order in which they were admitted.
 The names of the persons who have
 been admitted to the membership of
 the Society since the last meeting are
 given in the following list. The names
 are given in the order in which they
 were admitted to the membership of
 the Society.

Tabula Alphabética III

*Exhibens Specimina diversarum inveni^{ant} scripturarum et quidem litterarum
latinarum majusc. quales in proutatis diplomatis cartis et codicibus occurrunt.*

a, ā 1108
A, 1115
a, 1140
A, 1200
a, 1264
A, 1300
a, 1310

X 1348
A, 1370
X 1400
S B 1108
B B 1140
f 1218

C 1108
C, 1115
C, 1310
O, 1400
G, 1400
L, 1400
A
z
b

D 1108
D, 1115
D, 1140
D, 1310
D, 1400
D, 1400
D, 1400
D, 1400

E 965
E, 1108
E, 1115
E, 1115
E, 1178
E, 1310
E, 1410

F 1115
F, 1310
F, 1370

G 1108
G, 1115
G, 1140

H 1100
H, 1108
H, 1115
H, 1178
H, 1264
H, 1310
H, 1400
H, 1348

I 1108
I, 1310
I, 1370

K 1108
K, 1140
K, 1264
K, 1370

L 1108
L, 1115
L, 1140
L, 1178

P. B. H. W. H. B. A. Y. / H. H. S. S.

2000 2000 2000 2000

2000 2000 2000 2000

2000 2000 2000 2000

2000 2000 2000 2000

2000 2000 2000 2000

2000 2000 2000 2000

2000 2000 2000 2000

2000 2000 2000 2000

2000 2000 2000 2000

2000 2000 2000 2000

Tabula Alphabética IV.
Exhibens Specimina Literarum Latinarum majuscularum

L. O. U. X. M. N. P. Q. R. S. T. V. W. Y. Z.

1108 1115 1140 1178 1210 1240 1273
 H. N. Y. D. J. S. R. N. P. U. M. R. N.

A. N. O. O.

P. P. P. P. P. P. P. P. P.

Q. Q. Q. Q. Q. Q. Q. Q.

R. K. R. R. B. P. T. P. R. E.

S. S. S. S. S. S. S.

T. T. T. T. T. T. T. T. T.

U. U. U. U. U. U. U. U.

V. W. Y. Z.

X. X. Y. Z.

Faint, illegible text, possibly bleed-through from the reverse side of the page. The text is arranged in approximately 10 horizontal lines within a rectangular border.

Tabula Alphabética V.

*Litterarum Latinarum minorum in praeclarissimis Diplomatis
chartis et codicibus mediæ ævi occurrentium adjectis annis quo exaratum
fuit, et his quodque monumentum.*

<p>a a a a 965 1108 1140 1146</p> <p>bb b b b 1108, 1115, 1140, 1146, 1190, 1212</p> <p>cc e e 1108, 1115, 1140, 889, 1146, 1157</p> <p>dd d d d 1108, 1115, 1140, 889, 1146, 1157</p> <p>ee e e f 889, 965, 1108, 1115</p> <p>ff f f f f f 1108, 1140, 1146, 1153, 1178</p> <p>gg g g g g g 1108, 1140, 1153, 1157, 1158, 1178, 1203</p> <p>hh h h h h 965, 1108, 1117, 1140, 1153, 1212</p> <p>ll l l l 889, 1108, 1117, 1140</p> <p>kk k k k 1108, 1117, 1278</p>	<p>ll ll ll 965 1108</p> <p>mm m m m 1108, 1157, 1178</p> <p>nn n n n 889, 965, 1108, 1178</p> <p>oo o o 889, 1108</p> <p>pp p p p p 889, 965, 1108, 1140, 1178</p> <p>qq q q q q 965, 1108, 1140</p> <p>rr r r r r r r 889, 965, 1108, 1115, 1146, 1153, 1158, 1178</p> <p>ss s s s s s s s 889, 965, 1108, 1140, 1146, 1178, 1108</p> <p>tt t t t t t 889, 965, 1108, 1140</p> <p>uu v v 1108</p> <p>ww w w w 1108, 1178</p> <p>xx x x x 1108, 1178</p>
--	---

Handwritten text at the top of the page, possibly a title or subtitle, which is mostly illegible due to fading and bleed-through.

Handwritten text in the first section of the table, consisting of several lines of characters and numbers.

Handwritten text in the second section of the table, continuing the sequence of characters and numbers.

Handwritten text in the third section of the table, including some characters that appear to be 'X' and 'Z'.

Handwritten text in the fourth section of the table, showing a continuation of the data series.

Handwritten text in the fifth section of the table, with some characters that look like 'D' and 'O'.

Handwritten text in the sixth section of the table, appearing as a single line of characters.

Handwritten text in the seventh section of the table, possibly a summary or a specific note.

Handwritten text in the eighth section of the table, which may be a concluding line or a reference.

Handwritten text at the bottom of the table, possibly a signature or a date.

Nedenstaaende

er en Extract af Kn. Hlennebergs: "hvad er Wda? eller
 vindersogelde over de ved Gallekhuus fundne Guldhorn,
 aalborg 1812, S. 177, 178, indeholdende Anførelse af og
 Forklaring over Guds Skriften paa det ved Gallekhuus,
 paa Grevskabet Schackenberg i Møgeltønder Sogn den 24^{de}
 Aprill 1734 fundne Guldhorn, samt et hidindtil ube-
 kjendt Aelfskabet, som Forfatteren har indraget deraf."

§.31. Det hele faaer en saadan Betydning, naar Ordene adskilles
 og .Vællerne udfyldes:

M<NIMPFXRTIY::H<T|ZFY::H<RTF::TTPIM<::
 MHAOMBE<ELTIS<GUOTITSES<GURNE<TEPIMLO<

Magnam Hecatomben Celtis gütizes Gurne! Megiltündarii templo
 Tempore Julio Anni 1155 (v. 1055). Gurne! Du skal ofre paa go-
 =thisk Maneer dette store Hecatombe til Møgiltønders Tempel
 i Aaret 1155 ved Juletid (1055) .-

§.32. Af disse Røner, som Hornet opviser, faae vi nu den stør-
 ste Deel af, tabt og i den fældigere Tid ubekjendt Alphabet
 tid.

N	A		<	H		P	P
P	B		I	I		R	R
X	C		--	K		Y	S
--	D		~	L		↑	T
F	E		M	M		<	U. OU. V.
--	F		+	N		~	Z. TS
H	G		↑	O		M	ML. MCL.

Af de gamle græske Alphabeter, hvoraaf dette nærværende er
 laant, var det ikke vanskeligt, da man seer Forfatterens Maa-
 de at danne sine Røner paa, at tænke sig Figurerne for
 de 3 Bogstaver, som mangle. D har uden Tvivl lignet T,

maaſkee til Forſkjel har det høvt en liden Streg over Støt.
..ten †. F har vel tegnet det grafke Q i gothiſk Form ϕ;
og K, det grafke x -- K eller V..

Abgestammte ex en Copie af Tab. IV, lörende til: "Send
 "Schreiben des Königs: Sächsischen Alterthums-Vereins an
 die Freunde kirchlicher Alterthümer im Königreiche Sach-
 sen". Dresden. 1840. -

Schriftarten des Mittelalters. -

A B C D

À Á Â Ã. B. C. C. C. D. D. D. D. D.

E F G H I K

È É Ê. F. G. G. G. G. H. I. K. K. K.

L M

L. L. L. L. M. M. M. M. N. N. N. N. N. N.

N O P Q R S

N. N. N. O. O. P. P. P. Q. Q. R. R. R. S. S. S.

T U & V W X Y Z

T. T. U. U. U. V. V. V. W. X. X. Y. Y. Z. Z.

a. b. c. d. e. f. g. h. i. k. l. m. n. o. p. q. r. [s. t.
 a. a. b. c. d. e. e. g. h. i. k. l. m. n. o. o. p. p. q. r. s. t. t.

u & v. w. x. y. z.

u. v. w. x. y. z.

1. 5. 10. 50. 100. 500. 1000. 1. 5. 10. 50. 100. 500. 1000.

I. V. X. L. a. D. M. i. v. x. l. e. d. m.

Arabische Ziffern. -

1. 2. 3. 4. 5. 6. 7. 8. 9. 0.

1. 2. 3. 4. 5. 6. 7. 8. 9. 0.

Faint, illegible handwritten text at the top of the page, possibly bleed-through from the reverse side.

A large rectangular area containing extremely faint, illegible text, likely bleed-through from the reverse side of the page. The text is mostly mirrored and difficult to decipher.

